



## 400 mt Offshore Mast Crane



**Design and delivery of customized equipment**

## Storage Winch / traction winch



## Active Heave Compensator



Admiraal Trompstraat 2  
3115 HH Schiedam  
PO box 150  
3100 AD Schiedam  
Harbour 561  
The Netherlands  
Phone: +31 (0) 10 245 22 22  
Fax: +31 (0) 10 245 22 22  
E-mail: mail@huisman-itrec.com  
Internet: www.huisman-itrec.com

© Huisman Special Lifting Equipment B.V.  
This leaflet may not be copied, reproduced, distributed or dis-closed by any other than Huisman Special Lifting Equipment B.V. or its subsidiaries and affiliates. This leaflet shall not be deemed to make any representation or warranty as to the accuracy or completeness of the information reflected therein. On the products as described in this leaflet intellectual property rights are vested.

## General Specifications

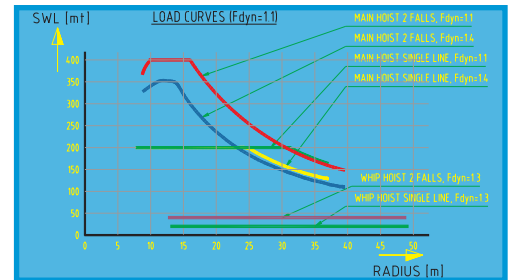
400mt Offshore Mast Crane – Active and Passive Heave Compensated  
Weight of crane: approx. 525mt (excluding wire rope)  
Design code: LRS – CLAME 2003  
Design temperature: -10 °C  
Operational wind speed: up to 20 m/s  
Drive system: Electric, frequency controlled  
Slewing range: 450°  
Tuggers: 2x 10 mt

## Main dimensions

Total height (jib 0°): 40.8 m (from deck level)  
Total height (jib 81°): 61.5 m (from deck level)  
Pivot height: 14.15 m (from deck level)  
Tail swing: approx. 6 m (radius)  
Boom system length: 35.1 m  
Fly-jib system length: 12.5 m  
Type of boom: box girder

## Capacities

Main hoist  
SWL 2 falls: 400 mt at 16.5 m  
SWL 1 fall: 200 mt at 31.5 m  
Hoisting speed 2 falls: full load 10.5 m/min  
Hoisting speed 2 falls: reduced load 21 m/min  
Hoisting speed 1 fall: full load 21 m/min  
Hoisting speed 1 fall: reduced load 42 m/min  
Minimum radius: 7.8 / 8.8 m  
Maximum radius: 37 / 39.5 m  
Wire rope diameter: 92 mm  
Hooktravel 2 falls: up to 2,500 m  
Hooktravel 1 fall: up to 5,000 m



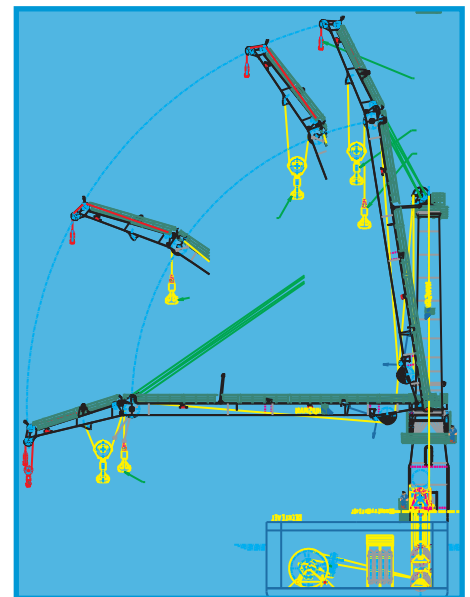
## Heave Compensation Main Hoist

Stroke on wire: 5 m  
Maximum speed: 75 m/min  
Compensated tip motion single line: 5 m, period 12 sec  
Compensated tip motion single line: 4 m, period 10 sec  
Compensated tip motion single line: 3.2 m, period 8 sec

## Whip hoist

SWL 2 falls: 40 mt at 49m  
SWL 1 fall: 20 mt at 49 m  
Hoisting speed 2 falls: full load 35 m/min  
Hoisting speed 2 falls: reduced load 70 m/min  
Hoisting speed 1 fall: full load 70 m/min  
Hoisting speed 1 fall: reduced load 140 m/min  
Minimum radius: 13 m  
Maximum radius: 49 m  
Hooktravel 2 falls: 250 m  
Hooktravel 1 fall: 500 m

Hydraulic Power Unit, Storage winch, Nitrogen Pressure Vessels Unit and Heave Compensator are installed below deck keeping the total COG of the crane down.



# Design and delivery of customized equipment